

PROJECT BY



SONALI

ACME

SHOWROOMS & OFFICES

Tidke Colony

Welcome To  
**The Next Level**



# Are you looking for new Business Place

**with**

- Prime Location ?
- Best Connectivity ?
- Easy Transport ?
- Spacious Area ?
- Elegant Structure ?
- Best Price ?
- Maintained Premises ?
- Ample Parking ?
- 24x7 Security ?



ONLY ONE  
**Answer**  
TO ALL YOUR  
**Questions**

SONALI  
**ACME**  
SHOWROOMS & OFFICES

■ **Tidke Colony** ■

SONALI  
**ACME**  
SHOWROOMS & OFFICES  
Tidke Colony

**NIGHT VIEW**

Artist's Impression



Maha RERA No.: P51600030900

\* For Representation Purpose Only

DISCLAIMER : The developer reserve the right to change plans, specifications & features, without prior notice of obligation, at their sole discretion. Perspectives shown here are artist's impression.

SONALI  
**ACME**  
SHOWROOMS & OFFICES  
Tidke Colony

**DAY VIEW**

Artist's Impression



Maha RERA No.: P51600030900

\* For Representation Purpose Only

DISCLAIMER : The developer reserve the right to change plans, specifications & features without prior notice of obligation. All other sale documents. For more details visit [www.sonaliacme.com](http://www.sonaliacme.com) here are artist's impressions.

Come to **Sonali ACME** at Tidke Colony, where key places are just a few metres away! This **landmark is perfect** for those with a vision for their **business and assets**. If you want to own not just an office but the **future**, this is the **opportunity** for you. So come and **take your business to the next level!**

Every aspect of **Sonali ACME** has been designed to **increase productivity** and instil a sense of **pride in the workplace**.



It's  
time for

**NEXT  
LEVEL**

# NEXT LEVEL

# 30+

## AMENITIES AND FEATURES

- State Of The Art Design
- World Class Architecture
- Excellent Location
- 60ft Road Front
- Vastu Consulted Offices
- Glass Facade
- Well Maintained Spaces
- Wide Range Of Product Mix Of Offices
- Ample Parking Space ( 2 Levels )
- Advanced & Premium Parking Systems
- Wi-Fi Connected Offices
- 24x7 CCTV
- Security
- Intercom
- Big Size Elevator
- Elevator With Battery Back Up
- Car Charging Points
- Solar Back Up In Common Areas
- Post Tension (PT) Advanced Technology To Avail Better Clear Headroom



SECURITY

\* For Representation Purpose Only



\* For Representation Purpose Only



\* For Representation Purpose Only



\* For Representation Purpose Only

- Housekeeping For Common areas
- RERA Registered Project
- Future Metro Prospect
- Natural Light
- Unobstructed Large Spans For Maximum Space Utilization
- Premium Entrance Lobby
- Showrooms Designed To Accommodate Heavy Loading Even Like Bank Lockers, Tile Showrooms Etc. \* T & C
- High Grade Of Concrete M35 & M40 Used.
- Title Clear Property ( Same Owner & Builder )
- TDR Purchased & Loaded
- Premium Quality Construction
- Fire Extinguishers
- Common Washroom Areas
- Food / Cafe/ Restaurant Area
- Utility Rooms ( For Amenities Like Printing, Typing, Etc.)
- Space For Gen-Sets
- Rainwater Harvesting
- Paint Ready Units
- Water Proofing



# 30+

## AMENITIES AND FEATURES





*this makes...*

SONALI  
ACME

100%

*Your*  
GROWTH  
PARTNER



# Grand Retail Space

A preferred destination for popular brands looking to reap the rewards of high visibility and quality footfalls.

## Showrooms Ideal For

- Banks
- Financial Institutions
- Automobile Dealerships
- Restaurants
- Boutiques
- Any Retail Showrooms

## Features

- Wide Frontage
- Corner Showrooms Giving Spacious Aura
- Floor to floor Height 6 m
- Mezzanine Floor to floor Height 3 m
- Designed For Heavy Loading\*
- Double Height Shutters
- Toilets Provided
- Situated On Prime Road 60 ft





\* For Representation Purpose Only

## Commercial Spaces

An array of spacious commercial spaces that exude the right aura and attitude.

### Offices Ideal For

- Chartered Accountants
- Advocates
- Clinics or labs
- Consultants
- Architects
- Gym
- Commercial Classes
- Builders
- Dentists
- Any Kind Of Commercial & Office Establishments



\* For Representation Purpose Only



\* For Representation Purpose Only

# We provide the **Highest Level** of quality.

PARTICULARS	SPECIFICATIONS
Steel	FE500 Grade
Concrete	M40 Grade / M35
Brick Work	AAC Block Work
Plaster Work	External - Double Coat Plaster Internal - Gypsum Plaster
Slab Thickness	175 mm (Generally)
Slab To Slab Top Height	Floor to Floor Height 3 Meter
Tiles	Premium Quality Tile-work
Lifts	Big Size Elevator with Backup
Windows	Aluminum Powder Coated (Wherever Required)
Opening Types	Safety Shutters For Showrooms
Surveillance System	CCTV Enabled At Common Premises
2 Floor Parking	Basement & Ground
Ventilation	For Natural Fresh Air & Light
RERA Registered	RERA Number : P51600030900
Tor & Loading	TDR Purchased & Loaded In NMC Plan
Toilet	Fully Furnished Toilets With Water Proofing
Electric	Concealed Type Of Wiring
Plumbing	Quality Plumbing
Staircase	1.5 m Width
Entrance Lobby	Grand Entrance Lobby At Ground Floor & 4 Luxury Lobbies
Fire Fighting	Fire Extinguisher
Water Tank	Two Separate Water Tanks Underground & Overhead
Paint Work	Double Coat Internal & External
Vastu	Vastu Consulted Premises



# Prime Location



**The SSK Solitaire Hotel : 30 sec**

**Mumbai Naka : 1 min**

**MICO Circle: 1 min**

**Chandak Circle : 1 min**

**HDFC Bank : 1 min**

**Kotak Mahindra Bank : 1 min**

**Courtyard Marriott Hotel : 5 min**

**District Court : 5 min**



**5 min : Thakkar Bazar**

**5 min : Collector Office**

**5 min : College Road**

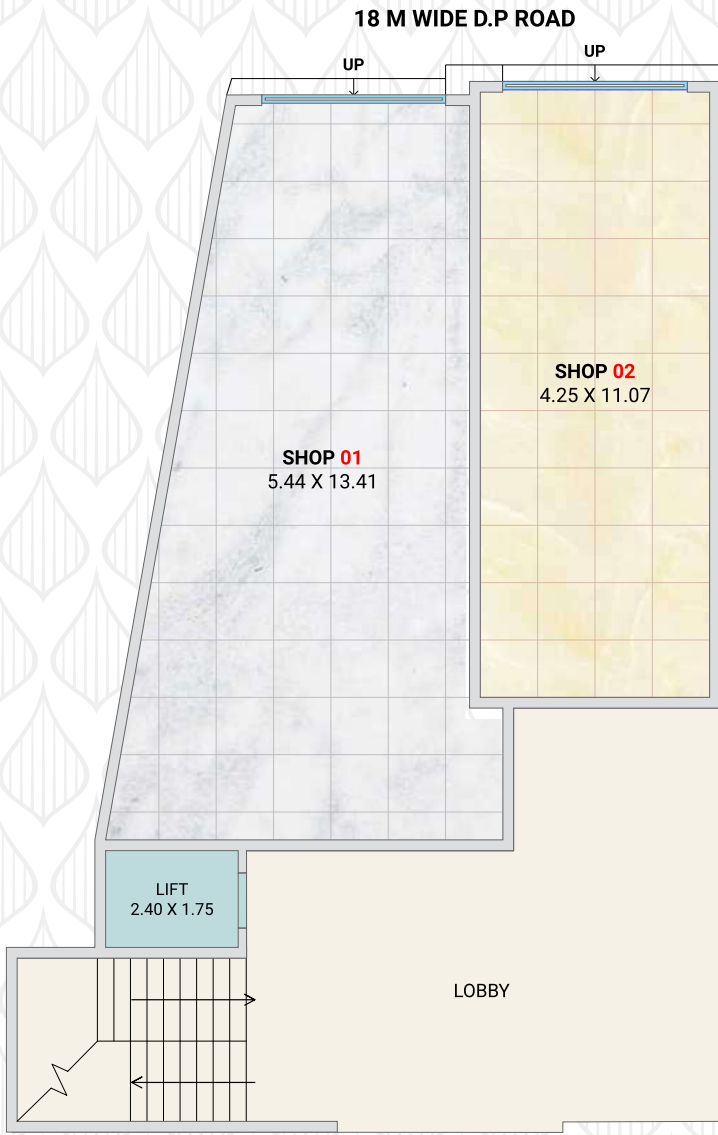
**5 min : City Center Mall**

**5 min : Wockhardt Hospital**

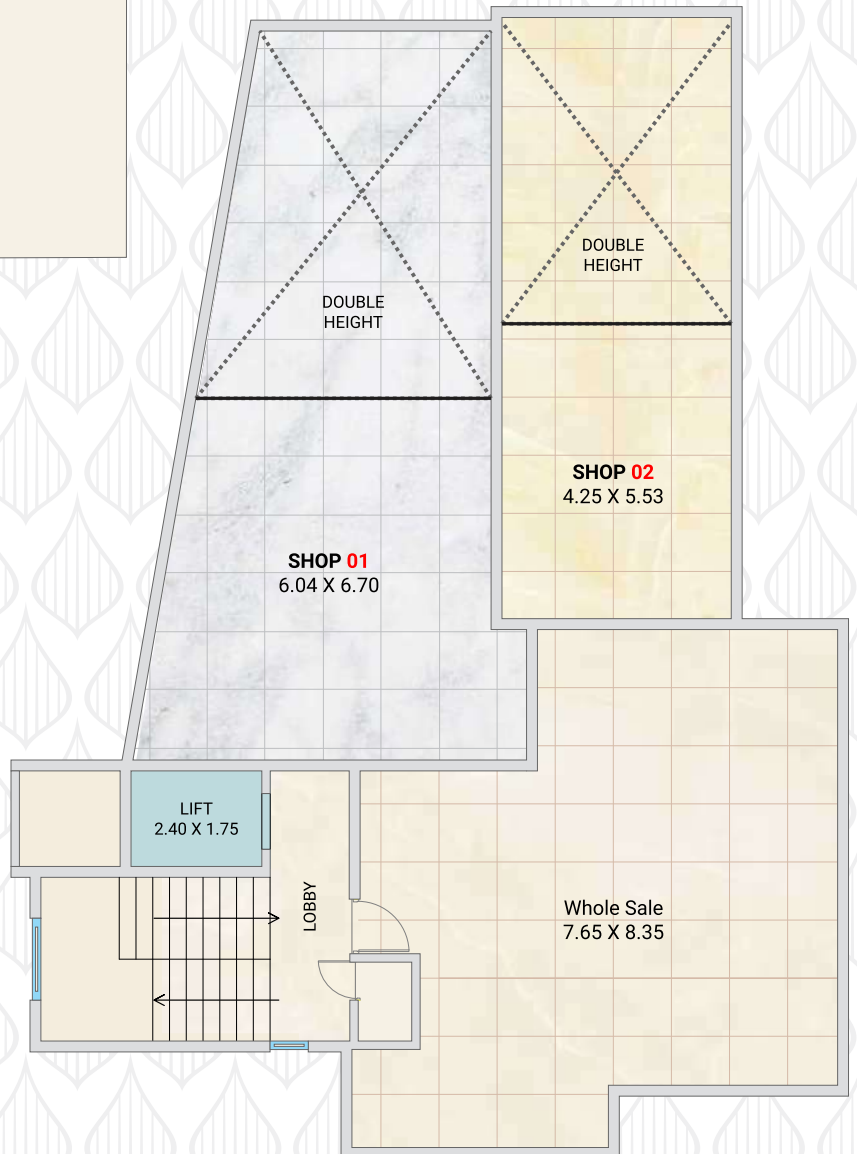
**10 min : The Gateway Hotel**

**10 min : Sahyadri Hospital**

**10 min : Dwarka Circle**



# Ground Floor Plan



# Mezzanine Floor Plan

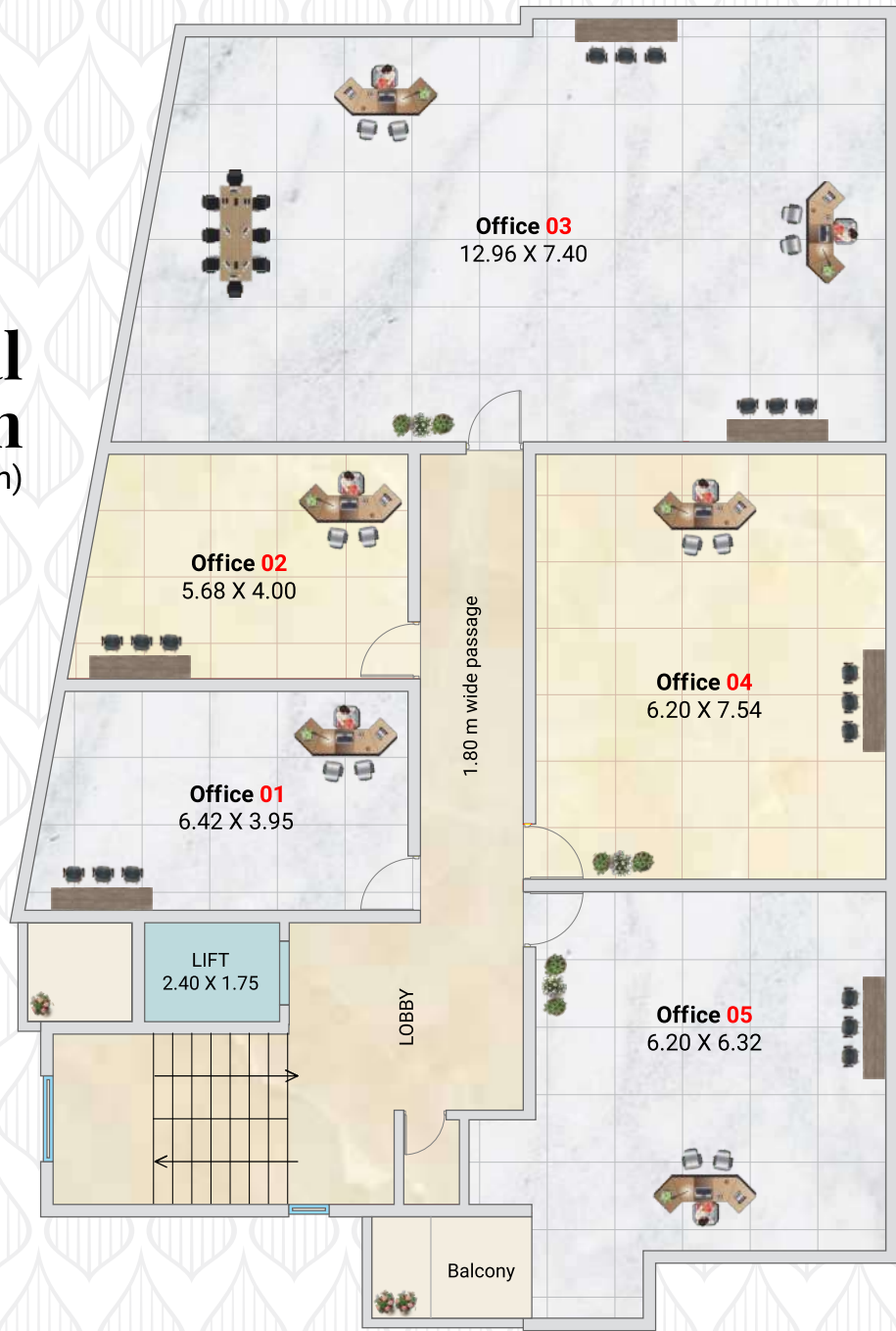


Notes: All Dimensions Are In Meters

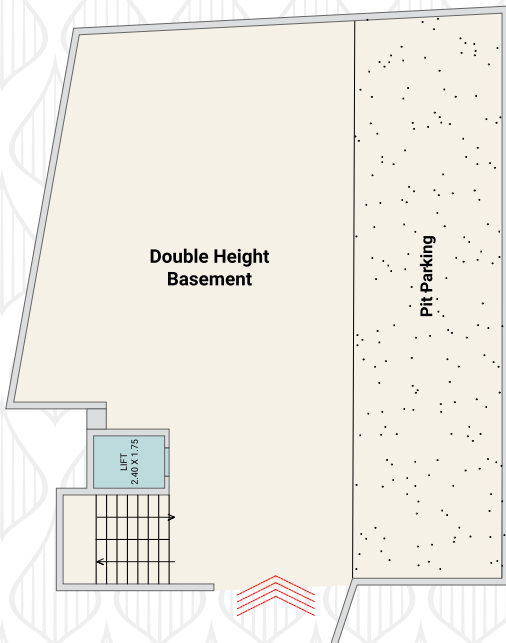
DISCLAIMER : The developer reserve the right to change plans, specifications & features without prior notice or obligation, at their sole discretion. Perspectives shown here are artists impressions.

# Typical Floor Plan

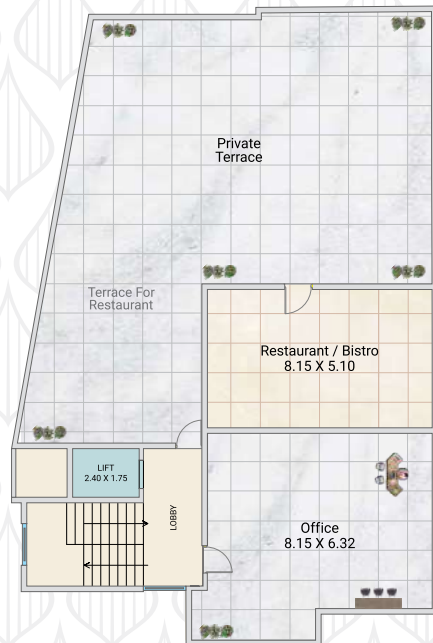
(1st To 4th)



## Basement Floor Plan



## 5th Floor Plan\*



\* Not For Sale



Notes: All Dimensions Are In Meters

DISCLAIMER : The developer reserve the right to change plans, specifications & features without prior notice or obligation, at their sole discretion. Perspectives shown here are artists impressions.

PROJECT BY



SONALI  
**ACME**  
SHOWROOMS & OFFICES  
■ Tidke Colony ■

Office Address :

5, Sonali Apartment, Dr. Vijan Hospital Road,  
Vise Mala, College Road, Nashik 422005.

Site Address :

Sonali ACME, Plot No. 60, Chhatrapati Shivaji  
Maharaj Road, Near The SSK Solitaire Hotel,  
Tidke Colony, Nashik 422002.


Website : [www.sonalidevelopersandconstruction.com](http://www.sonalidevelopersandconstruction.com)

 **+91 9145 466 466**

**Architect** : Soham Architectural Engineering Services (Er. Vijay Sanap)

**Structural Engineering** : Er. Prasanna Bhole

**Legal Advisor** : Adv. Sau. Vidyulata K Tated

 Maha RERA No.: P51600030900 / maharera.mahaonline.gov.in



Digital Card

DISCLAIMER : The developer reserve the right to change plans, specifications & features without prior notice or obligation, at their sole discretion. Perspectives shown here are artists impressions. All the images used are for representation purposes only & are not part of the offering.

 [animkscs.com](http://animkscs.com)